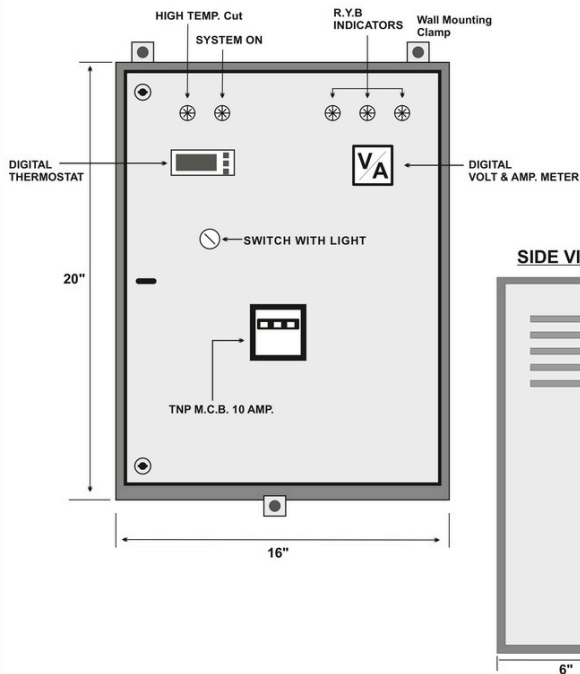


## ELECTRIC PANEL / BILL OF MATERIAL FOR OIL DUCT HEATER CAP - 1 KW

### ELECTRIC PANLE ( WALL MOUNTED)



### BILL OF MATERIAL

#### MATERIAL

OIL TANKS ----- 2 MM S.S. (304L)  
 PIPE ----- 18MM DIA S.S (304L)  
 ENCLOSURE 1MM S.S. 304 WITH S.S. FLANGE 2MM

#### HEATING ELEMENT

PORCLIN HEATER CARTRIDGE TYPE IN S.S SEAMLESS TUBE  
 RATING -----FOR 1 KW X 1 Step

#### INSULATION

50 mm THICK FIBER GLASS WOOL ( 32Kg DENSITY )  
 CLADED WITH 0.5 mm G.I. SHEET .

#### ELECTRICAL PANEL

#### CONTROLS

MASTER THERMOSTAT For OIL ----- 1 NO  
 DIGITAL THERMOSTAT (Subzero) For Air----- 1 NO

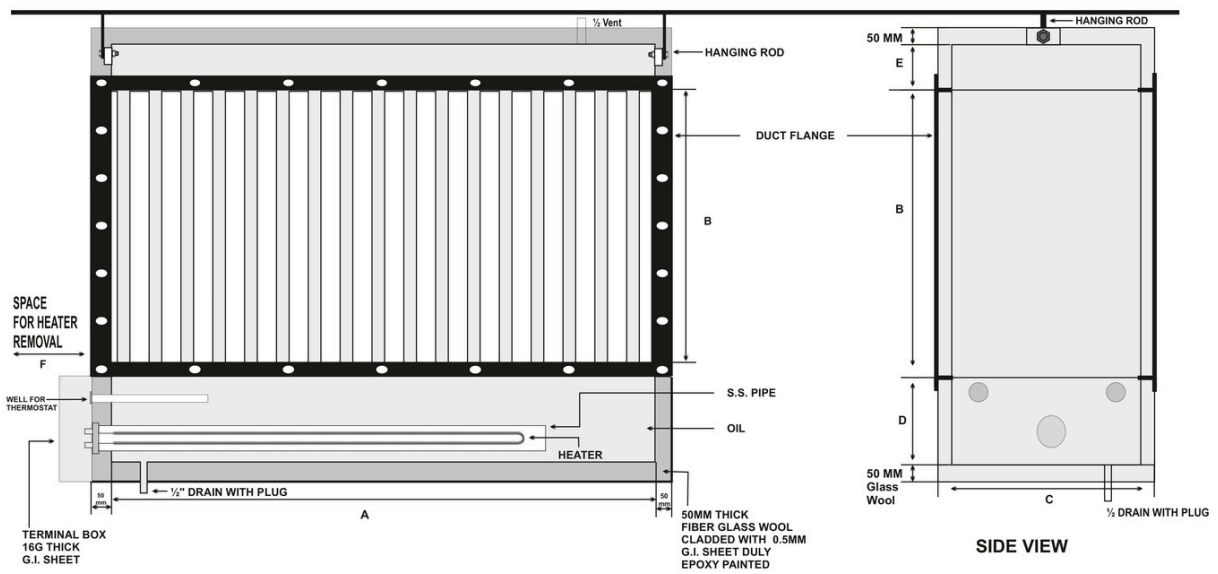
#### INCOMER

10 AMP. 2P M.C.B. ----- 1 NO  
 DIGITAL VOLT & AMP. METER WITH LIGHT & M.C.B ----- 1 SET

#### OUTGOING

10 AMP. THERMAL RATED CONTACTORS ( L&T ) ----- 1 NOS.  
 SWITCH WITH LIGHTS ( ESBE ) ----- 1 NO.  
 CONTROL M.C.B 6 AMP. ----- 1 NO.

### OVERALL DIMENSION OF OIL DUCT HEATER CAP - 1 KW



KW	A	B	C	D	E	F
1	750	250	100	100	50	450